



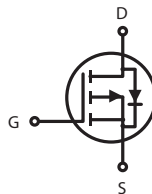
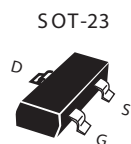
P-Channel Enhancement Mode MOSFET

PRODUCT SUMMARY

V _{DSS}	I _D	R _{DS(ON)} (m Ω) Max
-30V	-3A	75 @ V _{GS} = -10V
		100 @ V _{GS} = -4.5V

FEATURES

- Super high dense cell design for low R_{DS(ON)}.
- Rugged and reliable.
- SOT-23 Package.



ABSOLUTE MAXIMUM RATINGS (T_A=25°C unless otherwise noted)

Parameter	Symbol	Limit	Unit
Drain-Source Voltage	V _{DS}	- 30	V
Gate-Source Voltage	V _{GS}	± 20	V
Drain Current-Continuous ^a @ T _J =125°C -Pulsed ^b	I _D	- 3	A
	I _{DM}	- 10	A
Drain-Source Diode Forward Current ^a	I _S	-1.25	A
Maximum Power Dissipation ^a	P _D	1.25	W
Operating Junction and Storage Temperature Range	T _J , T _{STG}	-55 to 150	°C

THERMAL CHARACTERISTICS

Thermal Resistance, Junction-to-Ambient ^a	R θ JA	100	°C/W
--	---------------	-----	------

STS 3401

ELECTRICAL CHARACTERISTICS ($T_A = 25^{\circ}\text{C}$ unless otherwise noted)

Parameter	Symbol	Condition	Min	Typ ^c	Max	Unit
OFF CHARACTERISTICS						
Drain-Source Breakdown Voltage	BV _{DSS}	V _{GS} =0V, I _D =-250uA	-30			V
Zero Gate Voltage Drain Current	I _{DSS}	V _{DS} =-24V, V _{GS} =0V			-1	uA
Gate-Body Leakage	I _{GSS}	V _{GS} =±20V, V _{DS} =0V			±100	nA
ON CHARACTERISTICS ^b						
Gate Threshold Voltage	V _{GS(th)}	V _{DS} =V _{GS} , I _D = -250uA	-1	-1.5	-2.5	V
Drain-Source On-State Resistance	R _{DS(ON)}	V _{GS} = -10V, I _D =-3A			75	m-ohm
		V _{GS} = -4.5V, I _D = -2A			100	m-ohm
On-S tate Drain Current	I _{D(ON)}	V _{DS} = -5V, V _{GS} = -10V	6			A
Forward Transconductance	g _{FS}	V _{DS} = -5V, I _D = - 3A		5		S
DYNAMIC CHARACTERISTICS ^c						
Input Capacitance	C _{ISS}	V _{DS} =-15V, V _{GS} = 0V f =1.0MHz		653		pF
Output Capacitance	C _{OSS}			130		pF
Reverse Transfer Capacitance	C _{RSS}			97		pF
SWITCHING CHARACTERISTICS ^c						
Turn-On Delay Time	t _{D(ON)}	V _D = -15V, I _D = -1A, V _{GEN} = - 10V, R _{GEN} = 6 ohm R _L = 15 ohm		13		ns
Rise Time	t _r			7		ns
Turn-Off Delay Time	t _{D(OFF)}			58		ns
Fall Time	t _f			26		ns
Total Gate Charge	Q _g	V _{DS} =-15V,I _D =-3A,V _{GS} =-10V		13.5		nC
		V _{DS} =-15V,I _D =-3A,V _{GS} =-4.5V		7		nC
Gate-Source Charge	Q _{gs}	V _{DS} =-15V, I _D = -3A, V _{GS} =-10V		2.3		nC
Gate-Drain Charge	Q _{gd}			2.8		nC

STS3401

ELECTRICAL CHARACTERISTICS (T_A=25 °C unless otherwise noted)

Parameter	Symbol	Condition	Min	Typ ^c	Max	Unit
DRAIN-SOURCE DIODE CHARACTERISTICS ^b						
Diode Forward Voltage	V _{SD}	V _{GS} = 0V, I _S = -1.25A		-0.8	-1.2	V

Notes

- a.Surface Mounted on FR4 Board, t_≤10sec.
b.Pulse Test:Pulse Width ≤ 300us, Duty Cycle ≤ 2%.
c.Guaranteed by design, not subject to production testing.

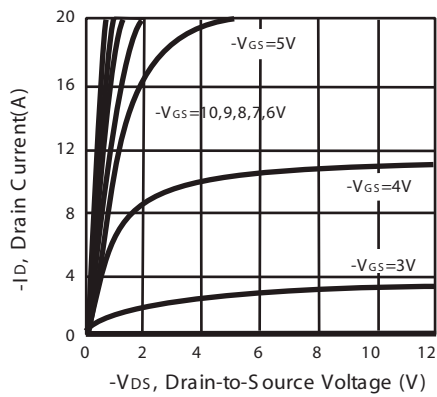


Figure 1. Output Characteristics

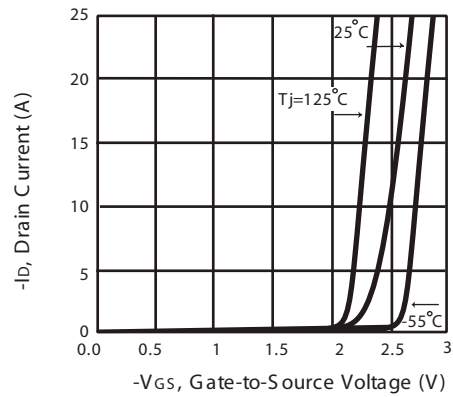


Figure 2. Transfer Characteristics

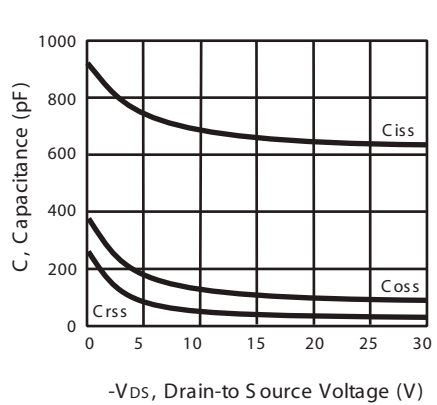


Figure 3. Capacitance

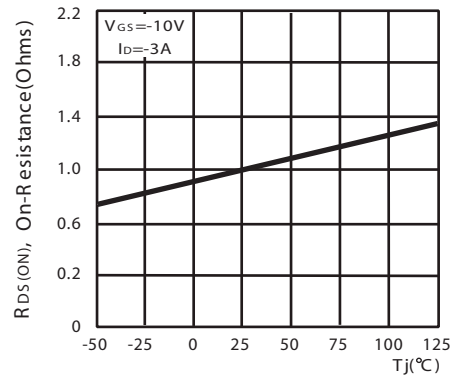
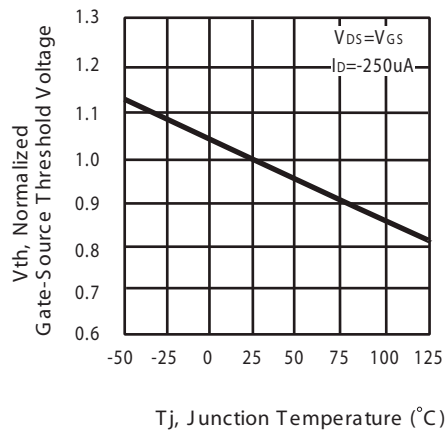


Figure 4. On-Resistance Variation with Temperature

STS3401



with Temperature

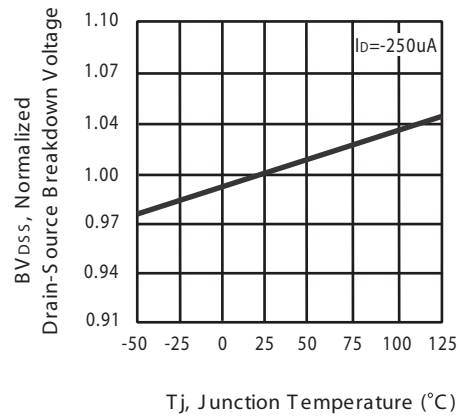


Figure 6. Breakdown Voltage Variation with Temperature

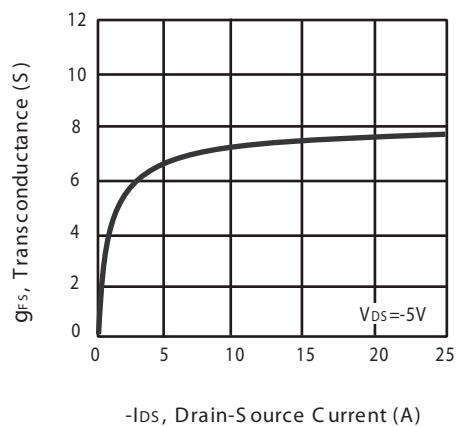


Figure 7. Transconductance Variation with Drain Current

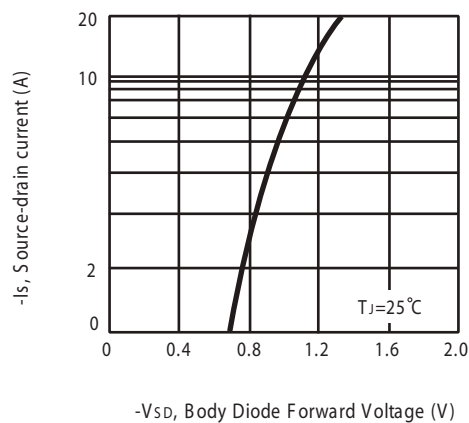


Figure 8. Body Diode Forward Voltage Variation with Source Current

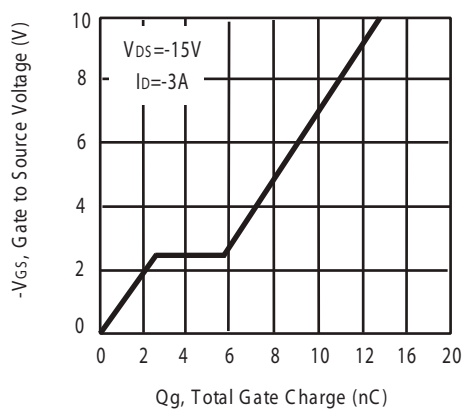


Figure 9. Gate Charge

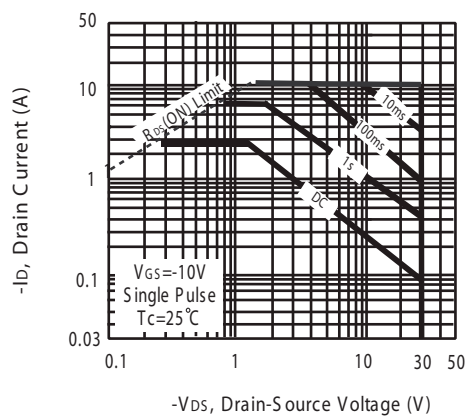


Figure 10. Maximum Safe Operating Area

STS 3401

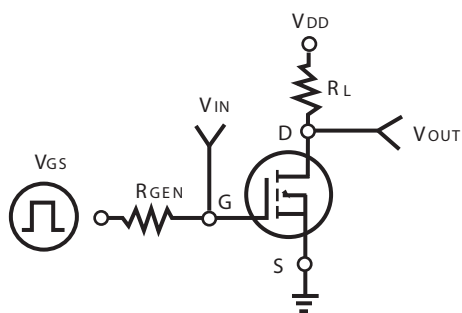


Figure 11. S Switching Test Circuit

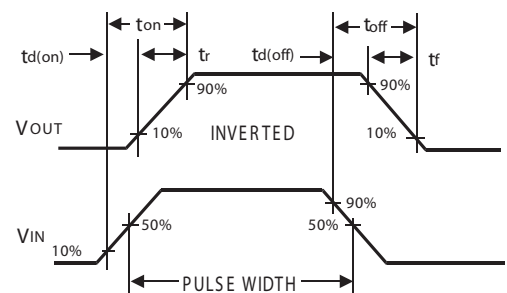
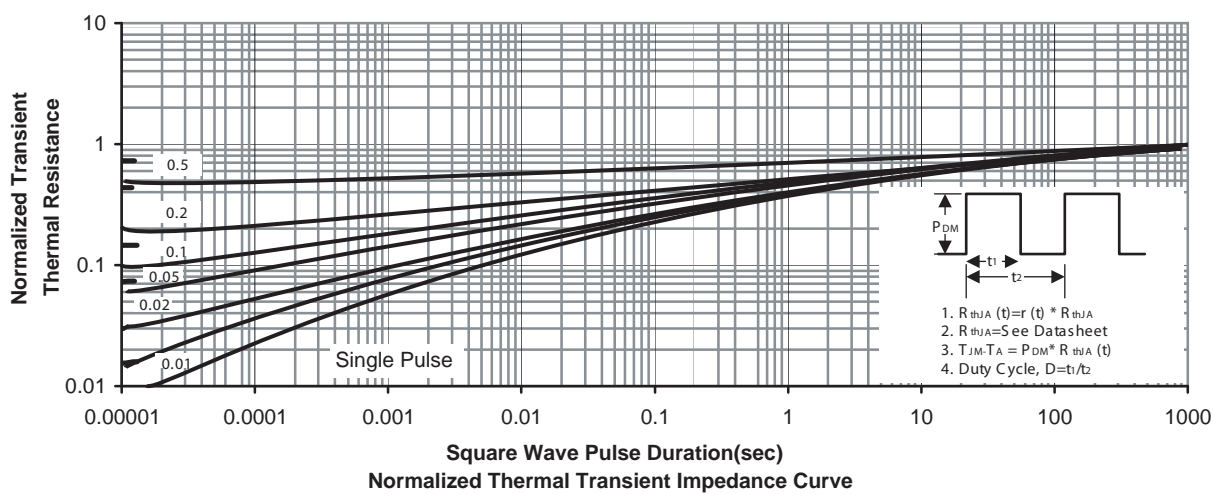


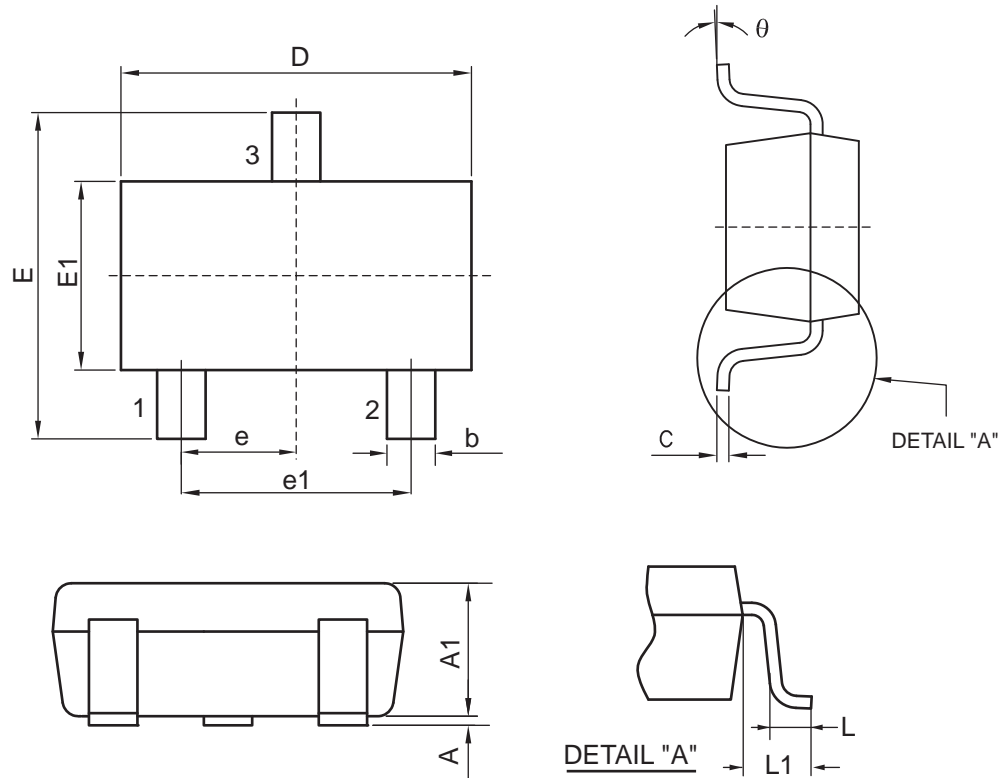
Figure 12. S Switching Waveforms



STS 3401

PACKAGE OUTLINE DIMENSIONS

SOT-23

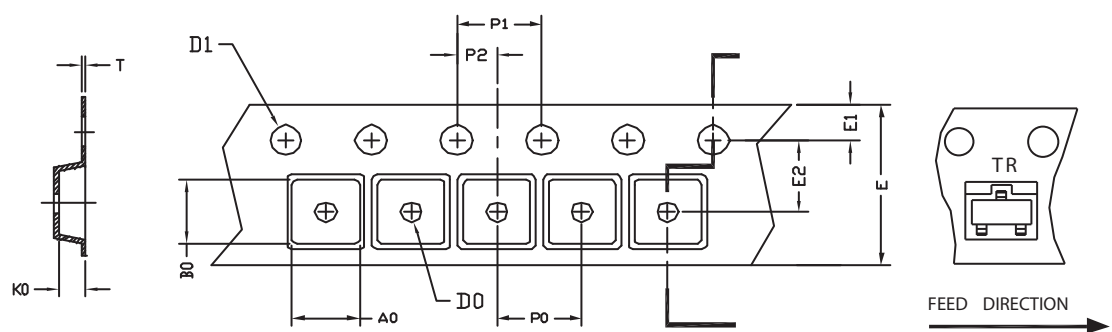


SYMBOLS	MILLIMETERS		INCHES	
	MIN	MAX	MIN	MAX
D	2.800	3.000	0.110	0.118
E	2.700	2.900	0.106	0.114
E1	1.500	1.700	0.059	0.067
e	0.950 BSC		0.037 BSC	
e1	1.900 BSC		0.075 BSC	
b	0.300	0.500	0.012	0.020
C	0.080	0.200	0.003	0.009
A	0.010	0.150	0.0004	0.006
A1	0.940	1.300	0.037	0.051
L	0.300	0.600	0.012	0.024
L1	0.600 REF.		0.024 REF.	
θ	0°	6°	0°	6°

STS 3401

SOT-23 Tape and Reel Data

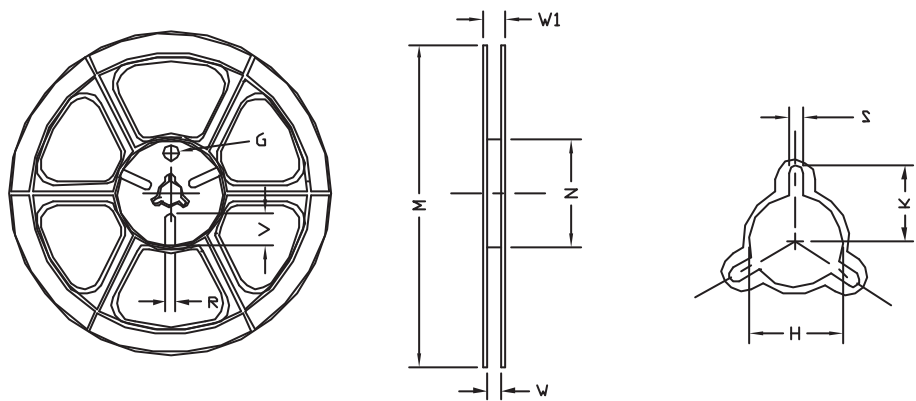
SOT-23 Carrier Tape



UNIT:mm

PACKAGE	A0	B0	K0	D0	D1	E	E1	E2	P0	P1	P2	T
SOT-23	3.20 ±0.10	3.00 ±0.10	1.33 ±0.10	1.00 ±0.25	1.50 ±0.10	8.00 +0.30 -0.10	1.75 ±0.10	3.50 ±0.05	4.00 ±0.10	4.00 ±0.10	2.00 ±0.05	0.20 ±0.02

SOT-23 Reel



UNIT:mm

TAPE SIZE	REEL SIZE	M	N	W	W1	H	K	S	G	R	V
8mm	178	178 ±1	60 ±1	9.00 ±0.5	12.00 ±0.5	13.5 ±0.5	10.5	2.00 ±0.5	10.0	5.00	18.00

STS 3401

TOP MARKING DEFINITION

