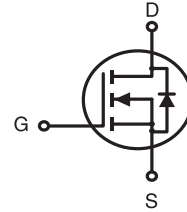


**N-Channel Logic Level Enhancement Mode Field Effect Transistor****PRODUCT SUMMARY**

V _{DSS}	I _D	R _{DS(ON)} (mΩ) Max
40V	60A	8.5 @ V _{GS} =10V
		11 @ V _{GS} =4.5V

FEATURES

- Super high dense cell design for extremely low R_{DS(ON)}.
- High power and current handling capability.
- TO-220 & TO-263 package.

**ABSOLUTE MAXIMUM RATINGS (T_C=25°C unless otherwise noted)**

Symbol	Parameter		Limit	Units
V _{DS}	Drain-Source Voltage		40	V
V _{GS}	Gate-Source Voltage		±20	V
I _D	Drain Current-Continuous ^a	T _C =25°C	60	A
		T _C =70°C	48	A
I _{DM}	-Pulsed ^b		177	A
E _{AS}	Single Pulse Avalanche Energy ^d		196	mJ
P _D	Maximum Power Dissipation ^a	T _C =25°C	62.5	W
		T _C =70°C	40	W
T _J , T _{STG}	Operating Junction and Storage Temperature Range		-55 to 150	°C

THERMAL CHARACTERISTICS

R _{θJC}	Thermal Resistance, Junction-to-Case ^a	2	°C/W
R _{θJA}	Thermal Resistance, Junction-to-Ambient ^a	50	°C/W

STB/P438A

Ver 1.0

ELECTRICAL CHARACTERISTICS (T_C=25°C unless otherwise noted)

Symbol	Parameter	Conditions	Min	Typ	Max	Units
OFF CHARACTERISTICS						
BV _{DSS}	Drain-Source Breakdown Voltage	V _{GS} =0V , I _D =250uA	40			V
I _{DSS}	Zero Gate Voltage Drain Current	V _{DS} =32V , V _{GS} =0V			1	A
I _{GSS}	Gate-Body leakage current	V _{GS} = ±20V , V _{DS} =0V			±100	nA
ON CHARACTERISTICS						
V _{GS(th)}	Gate Threshold Voltage	V _{DS} =V _{GS} , I _D =250uA	1	1.8	3	V
R _{DS(ON)}	Drain-Source On-State Resistance	V _{GS} =10V , I _D =30A		6.8	8.5	m ohm
		V _{GS} =4.5V , I _D =26A		8.1	11	m ohm
g _{FS}	Forward Transconductance	V _{DS} =10V , I _D =30A		69		S
DYNAMIC CHARACTERISTICS °						
C _{iss}	Input Capacitance	V _{DS} =20V,V _{GS} =0V f=1.0MHz		1540		pF
C _{oss}	Output Capacitance			248		pF
C _{RSS}	Reverse Transfer Capacitance			180		pF
SWITCHING CHARACTERISTICS °						
t _{D(ON)}	Turn-On DelayTime	V _{DD} =20V		28		ns
t _r	Rise Time	I _D =1A		31		ns
t _{D(OFF)}	Turn-Off DelayTime	V _{GS} =10V		62		ns
t _f	Fall Time	R _{GEN} =6 ohm		36		ns
Q _g	Total Gate Charge	V _{DS} =20V,I _D =25A,V _{GS} =10V		26.5		nC
		V _{DS} =20V,I _D =25A,V _{GS} =4.5V		12.5		nC
Q _{gs}	Gate-Source Charge	V _{DS} =20V,I _D =25A,		2.8		nC
Q _{gd}	Gate-Drain Charge	V _{GS} =10V		7.8		nC
DRAIN-SOURCE DIODE CHARACTERISTICS AND MAXIMUM RATINGS						
V _{SD}	Diode Forward Voltage	V _{GS} =0V,I _S =2A		0.77	1.3	V
Notes						
a.Surface Mounted on FR4 Board,t < 10sec.						
b.Pulse Test:Pulse Width ≤ 300us, Duty Cycle ≤ 2%.						
c.Guaranteed by design, not subject to production testing.						
d.Starting T _J =25°C,VDD=20V,L=0.5mH.(See Figure13)						

Aug,02,2010

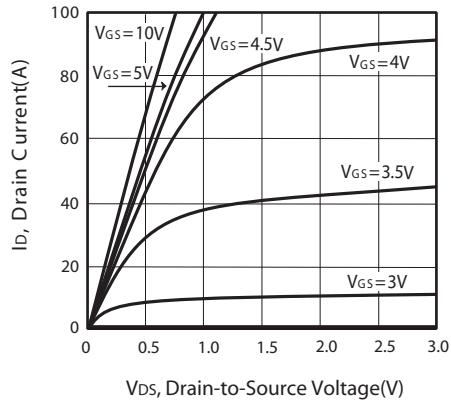


Figure 1. Output Characteristics

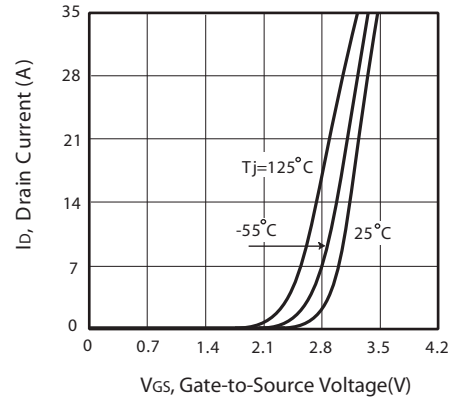


Figure 2. Transfer Characteristics

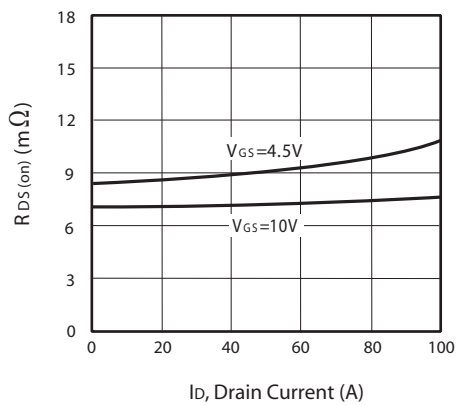


Figure 3. On-Resistance vs. Drain Current and Gate Voltage

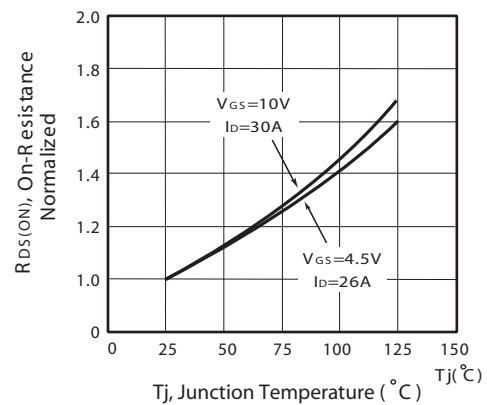


Figure 4. On-Resistance Variation with Drain Current and Temperature

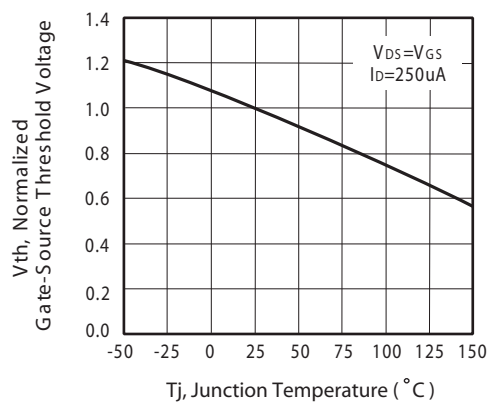


Figure 5. Gate Threshold Variation with Temperature

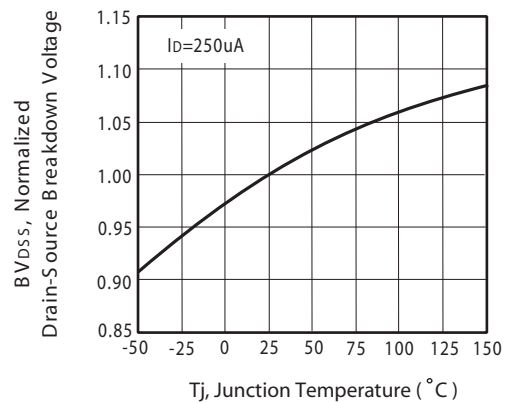


Figure 6. Breakdown Voltage Variation with Temperature

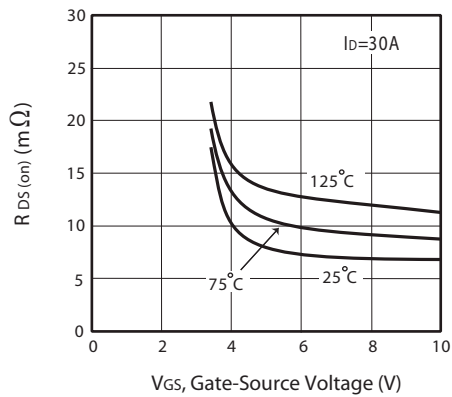


Figure 7. On-Resistance vs. Gate-Source Voltage

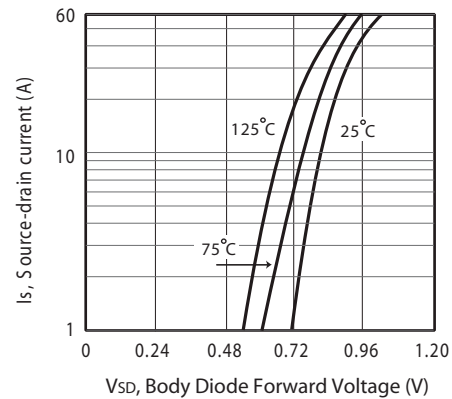


Figure 8. Body Diode Forward Voltage Variation with Source Current

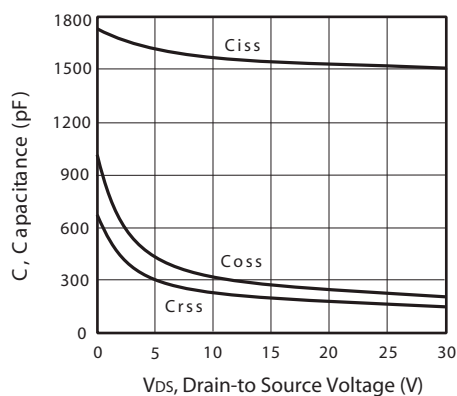


Figure 9. Capacitance

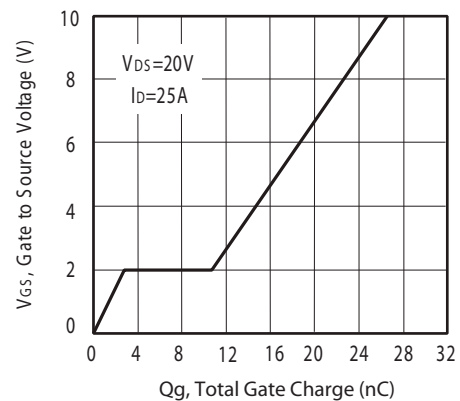


Figure 10. Gate Charge

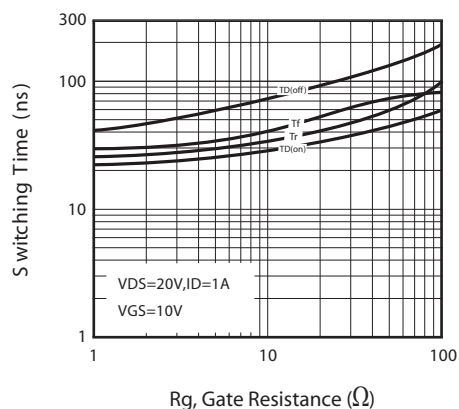


Figure 11. Switching Characteristics

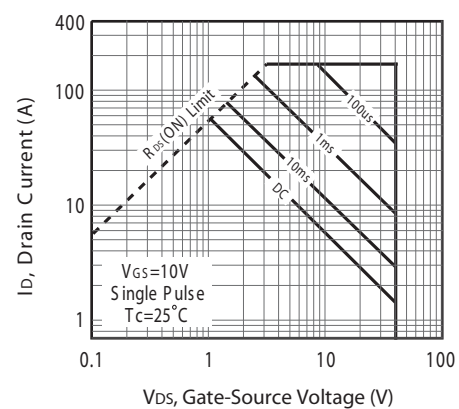
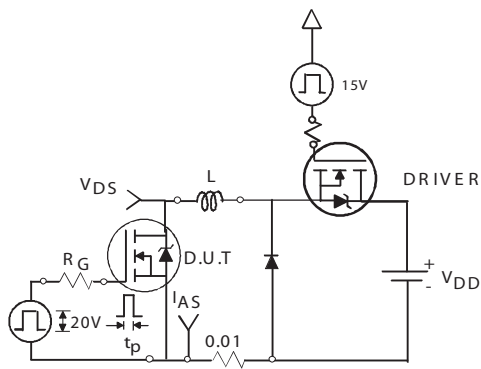
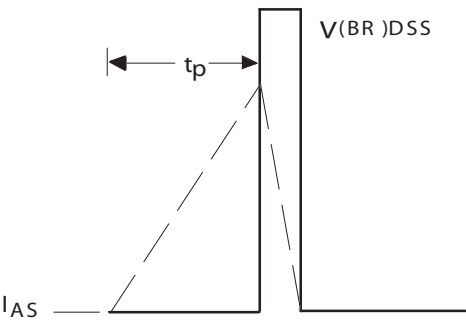


Figure 12. Maximum Safe Operating Area



Unclamped Inductive Test Circuit

Figure 13a.



Unclamped Inductive Waveforms

Figure 13b.

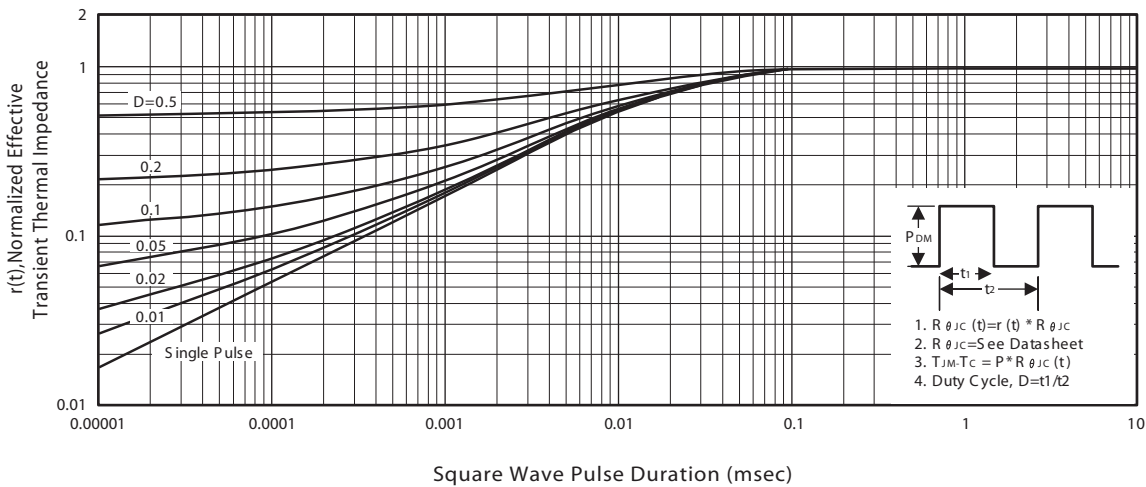


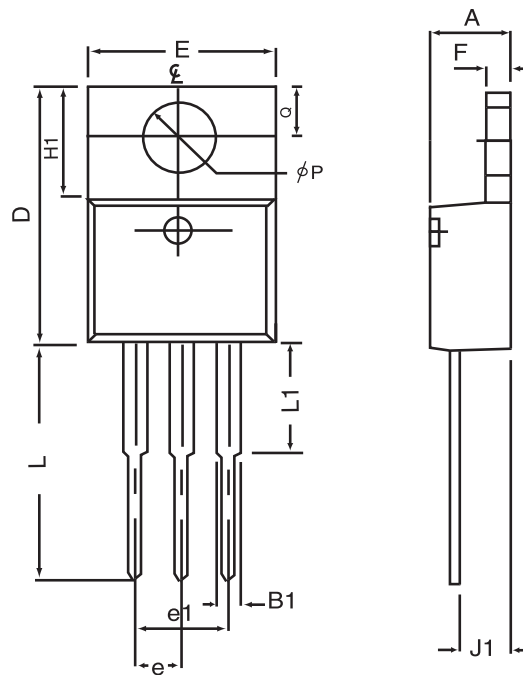
Figure 14. Normalized Thermal Transient Impedance Curve

STB/P438A

Ver 1.0

PACKAGE OUTLINE DIMENSIONS

TO-220

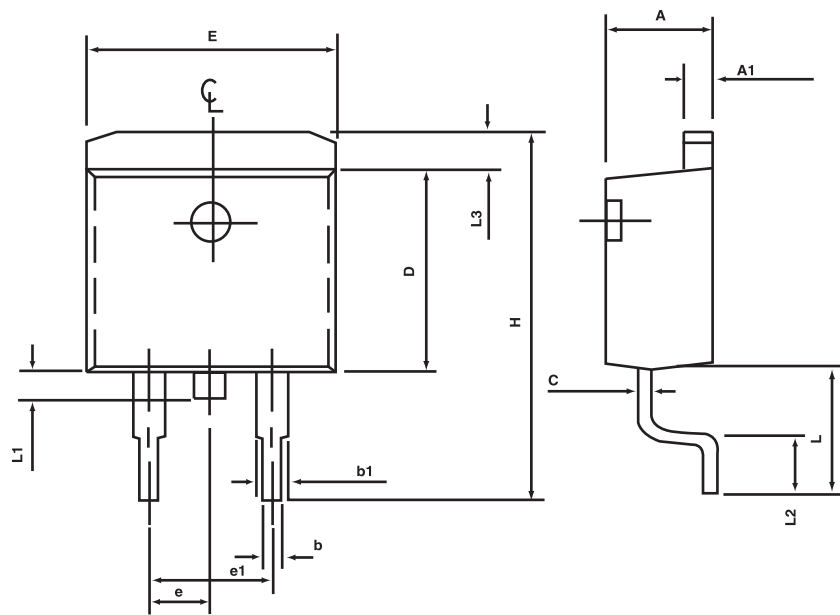


SYMBOLS	MILLIMETERS		INCHES	
	MIN	MAX	MIN	MAX
A	4.32	4.80	0.170	0.189
B1	1.27	1.65	0.050	0.630
D	14.6	16.00	0.575	0.610
E	9.70	10.41	0.382	0.410
e	2.34	2.74	0.092	0.108
e1	4.68	5.48	0.184	0.216
F	1.14	1.40	0.045	0.055
H1	5.97	6.73	0.235	0.265
J1	2.20	2.79	0.087	0.110
L	12.88	14.22	0.507	0.560
L1	3.00	6.35	0.120	0.250
φP	3.50	3.94	0.138	0.155
Q	2.54	3.05	0.100	0.120

Aug,02,2010

PACKAGE OUTLINE DIMENSIONS

TO-263AB



SYMBOLS	MILLIMETERS		INCHES	
	MIN	MAX	MIN	MAX
A	4.30	4.70	0.169	0.185
A1	1.22	1.32	0.048	0.055
b	0.69	0.94	0.027	0.037
b1	1.22	1.40	0.048	0.055
C	0.36	0.56	0.014	0.022
D	8.64	9.652	0.340	0.380
E	9.70	10.54	0.382	0.415
e	2.29	2.79	0.090	0.110
e1	4.83	5.33	0.190	0.210
H	14.60	15.78	0.575	0.625
L	4.70	5.84	0.185	0.230
L1	1.20	1.778	0.047	0.070
L2	2.24	2.84	0.088	0.111
L3	1.40 MAX		0.055 MAX	

TO-220/263AB Tube

